



**Made in the USA**  
**Material Handling**  
**and Delivery Products**  
**Catalog**



PACKAGING

EQUIPMENT

BOXES

5239-86 Street NW  
Edmonton, AB T6E 6T1  
Toll Free: 1 (866) 469-9198

# ***Liberator*** Hand Trucks



## **Exclusive Features**

- **600 lb. capacity** versus others 500 lb. capacity.
- **Frames have** 4 sided, ribbed cross members and extra wide logo channel at the top for rigidity and strength.
- **Assembled with** military grade rivets used on aircraft to prevent loosening up.
- **Welded style** handles are heat treated for superior strength.
- **Axles are** 91,000 lb., high tensile steel and won't bend, even under the heaviest loads.
- **Optional extruded** stair climbers are more durable than cast and have extra long life, reversible wear strips.
- **Extruded wheel** brackets will never crack or break and have a lifetime guarantee.
- **Exclusive 2 year warranty**

***B&P components are interchangeable with other manufacturers to make existing hand trucks last longer!***



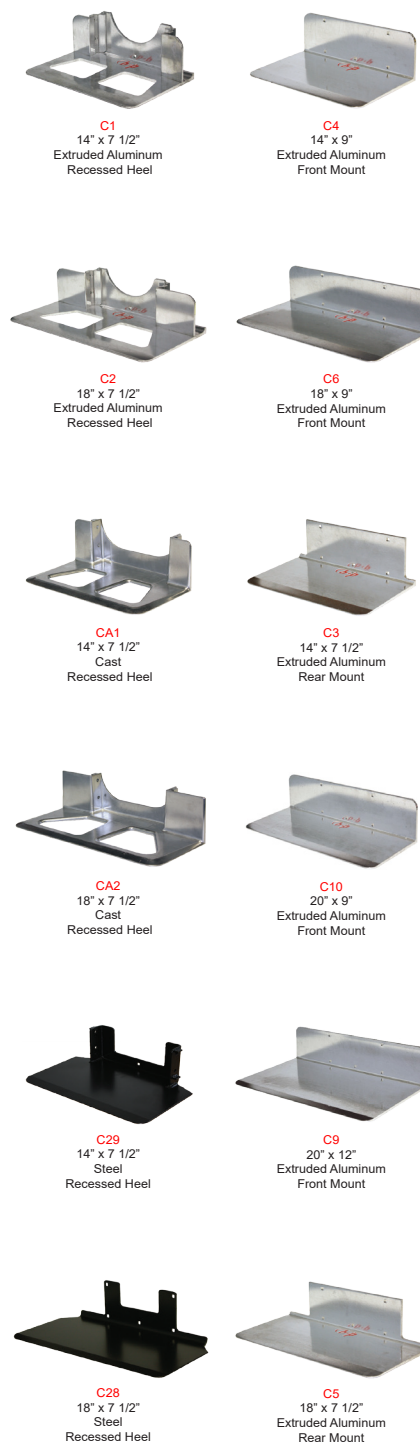
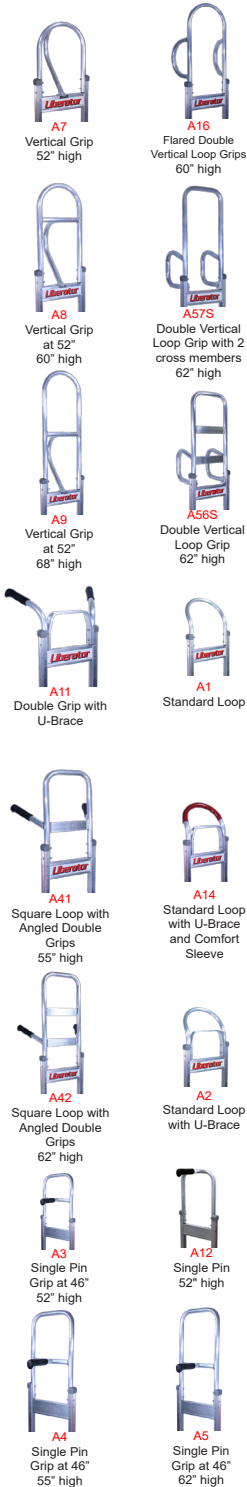
# Customizing your **Liberator** hand truck is as easy as A-B-C-D-E

## A Handle

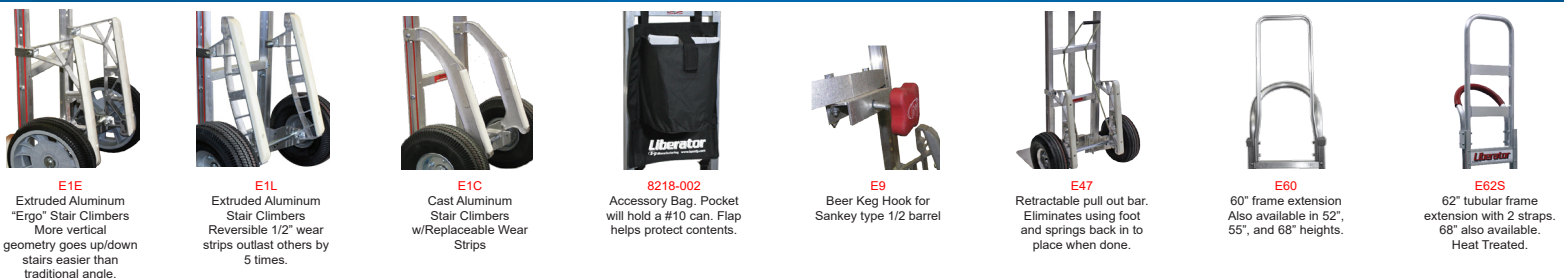
## B Frame

## C Nose Plate

## D Wheels



## E Accessories





# Convertible Hand Trucks

## Exclusive Features

- **Black Powder** coated slide/swivel tubes, helps to eliminate sticking when placing into up and down positions.
- **Frames have** 4-sided, ribbed cross members and extra wide logo channel for rigidity and strength.
- **Military Grade** rivets, also used on aircraft, prevents frame from loosening up.
- **Heavy Duty**, high quality TPR casters with longer lasting bearing and metal wing-brake standard on one side.
- **Extruded Wheel** brackets are guaranteed for life to never crack or break.
- **Lock bar** brackets have roll pins and cotter pins versus thin spring clips for superior strength and reliability.
- **Solid or** perforated deck options available as a snap-on accessory or permanent fixture.
- **Exclusive 2 year warranty!**



### **Liberator** High Capacity Convertibles

- **Choose from numerous** extruded nose plates, wheels and accessories.
- **Comfort sleeve** available in red or blue.
- **600/1200** capacity



### **SSR-2 & SSR-3** **SJR-2 & SJR-3** Convertibles

- **Cast aluminum** 18" x 7.5" nose plate with cut outs.
- **Choose** between 10" x 3.5" 4-ply pneumatic wheels or 10" x 3" no flat, non-marking super Carefree wheels.
- **500/1000** capacity

***Our convertibles are the strongest and most reliable trucks ever built.  
Guaranteed!***



# B&P Exclusive Brake Truck Features

*The **Liberator** line of dual disc brake trucks offer complete stopping power when needed, even if the tires get wet or greasy.*

## Dual Disc Brake Truck

- Dual automotive style disc brake system makes drum brakes obsolete.
- Components are heavy gauge steel and powder coated for longer life and better corrosion resistance.
- Extruded, more vertical, ergonomic stair climber design for ease of going up and down stairs.
- Available with most handle styles in both "T" rod and cable design.
- Kits are available to upgrade existing B&P, as well as some other brands of hand trucks, to dual disc brakes.
- Simplified, lightweight, ergonomic design is virtually maintenance free.
- Unique equalizer bar and single cable design ensures equal braking on both sides, even with uneven tire pressure.
- Optional pull out bar eliminates driver from using their foot to remove hand truck for enhanced ergonomics.
- Brake responsiveness is adjustable for driver's personal preference.
- Exclusive **2 year warranty** and lifetime on wheel brackets.



## Tread Brake Truck Features

- Superior brake design that makes others obsolete.
- Unique equalizer bar and single cable design ensures equal braking on both sides, even with uneven tire pressure.
- Available with most handle styles in both "T" rod and cable design.
- Kits are available to upgrade existing B&P, as well as some other brands of hand trucks, to the B&P tread brakes.
- Brake components are heavy gauge steel and powder coated for better corrosion resistance and longer life.
- Brake shoes are designed to provide maximum leverage and braking action. Square shoes last much longer and won't tear up tires like paddle designs.
- Optional pull out bar eliminates driver from using their foot to remove hand truck for enhanced ergonomics.
- Brake responsiveness is adjustable for driver's personal preference.



*The **Liberator** line of tread brake trucks are superior in every way to all other paddle brake designs.*

## Decals

- **Excellent** theft deterrent.
- **Free** National Brand decals and low-priced custom decals.
- **Display** your logo and company contact information.  
(e.g. PH#, web site, street address)

## Powder Coating

- **Showcase** your company colors.
- **Projects** a clean and professional image.
- **Protects** the aluminum and will not tarnish.
- **Durable** baked-on finish with UV protection to protect against fading.



***Combine your company decal with a high quality powder coated frame!***

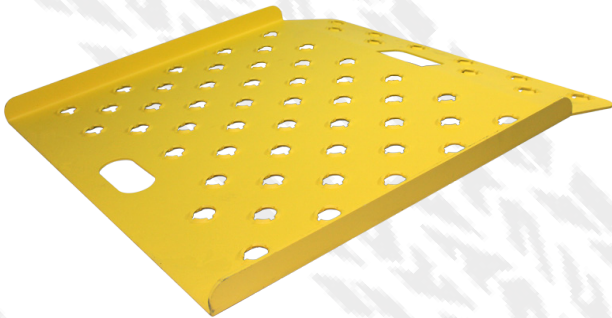


# B&P **Liberator** Curb Ramps



## Exclusive Features

- Raised, beveled holes punched with an "X" pattern for superior traction, even when wet.
- Integrated stops keep the ramp stationary on curbs.
- Lighter, stronger, and safer than all other aluminum curb ramps.
- Optional safety yellow helps prevent being tripped on or run over by pedestrians.
- Exclusive 2 Year Warranty!



***Get heavy hand truck loads over curbs without straining your back.***



## Exclusive Features

- **Formed deck** design is lightweight and strong, eliminating warping and waving.
- **Heavy duty welded** deck design provides resistance to twisting and deck curling.
  - \* Optional carpeted deck
  - \* Optional full perimeter rubber bumper will not peel up like glued designs.
- **Both** are extremely durable with a large selection of handles and caster kits to suit your application.
- **Decks** are available in an array of sizes and in tread or smooth plate.
- **Each** has a 2,500 lb capacity depending on caster selection.
- **2 year warranty!**

## Handle Options



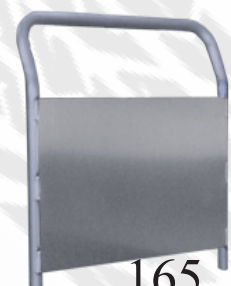
150



155



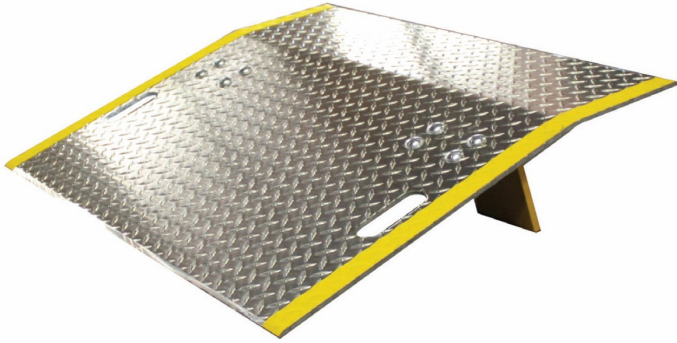
160



165



# Dock Plates & Boards

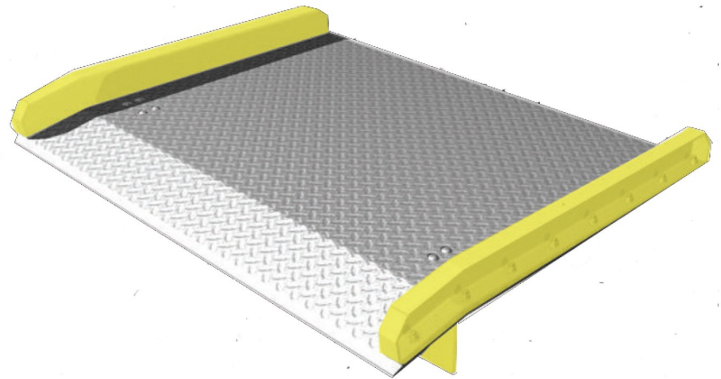


## Dock Plates

- Hand slots - for ease of lifting. Handles optional.
- Beveled edges - provide a smooth entry and exit.
- Engineered bend - keeps the plate flush with the dock and truck.
- Safety locking legs - Reversible for refrigerated applications.
- Skid resistant surface - Provides traction and safe footing for personnel.
- Safety yellow on edges - Provides better visibility even in low light situations.

## Dock Boards

- Lightweight aluminum with heavy duty steel curbs - Helps prevent run off. High visibility safety yellow.
- Bolt on steel legs - Reversible for refrigerated applications.
- Skid resistant surface - Provides excellent traction.
- Available in capacities to 15,000 lbs. and sizes up to 78" x 72"
- Optional lifting chains - Allows board to be lifted/moved with fork lift.



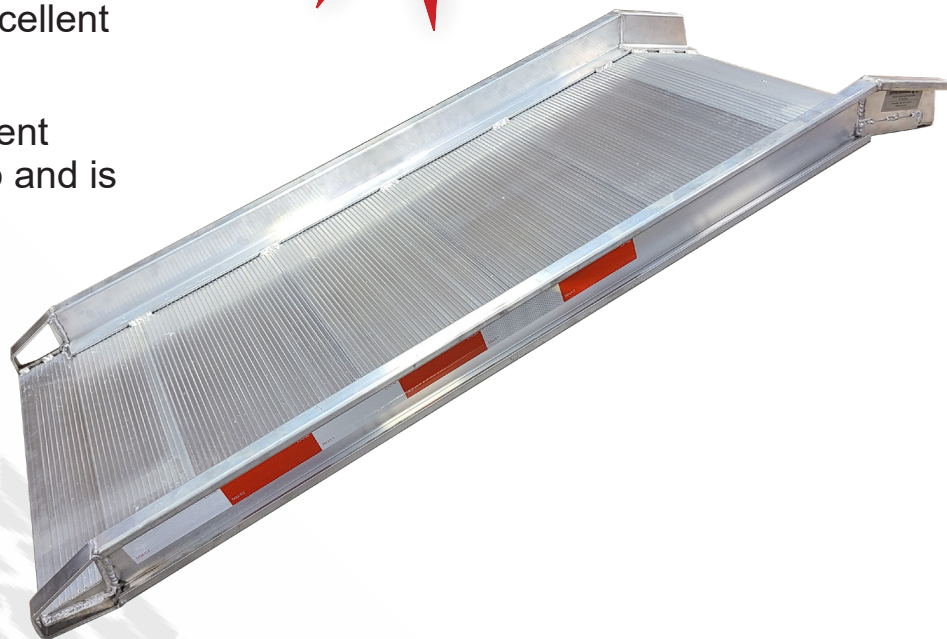
## A Note About Capacities:

All B&P dock plates are rated at actual capacities, per Aluminum Industry Association standards. Some other companies rate capacities with a formula that considers the fact that only two wheels of the four-wheel vehicle will be on the plate at one time. This can artificially overstate the capacities of the plates, creating a potentially dangerous situation. We state our capacities as actual, giving you an extra margin of safety.

# ***DEFENDER*** Walk Ramps

## **High Capacity Walk Ramp** **(HCR)**

- **Fully contoured** extrusions for superior strength.
- **Integrated**, welded handles for reliability and ease of deployment/storage.
- **Twin Tooth** decking provides excellent traction in inclement weather.
- **New side rail** design helps prevent hand truck wheels from riding up and is made of 6000 series aluminum.
- **Features** a safety locking pin on apron end and stop on underside to maintain the correct position.
- **DOT reflective** tape on both sides for low light visibility.



Part #	Dimensions	Capacity	List Price
HCR-3006	30" x 6'	4,000 lb	\$649.95
HCR-3012	30" x 12'	4,000 lb	\$1,173.95
HCR-3014	30" x 14'	4,000 lb	\$1,271.64
HCR-3016	30" x 16'	4,000 lb	\$1,368.73
HCR-3506	35" x 6'	4,000 lb	\$680.95
HCR-3512	35" x 12'	4,000 lb	\$1,208.32
HCR-3514	35" x 14'	4,000 lb	\$1,410.32
HCR-3516	35" x 16'	4,000 lb	\$1,522.21
HCR-3906	39" x 6'	4,000 lb	\$722.94
HCR-3912	39" x 12'	4,000 lb	\$1,298.32
HCR-3914	39" x 14'	4,000 lb	\$1,498.63
HCR-3916	39" x 16'	4,000 lb	\$1,628.14



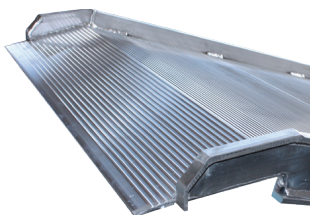
## Original Walk Ramps (PR/PRP)

- **Transports** easily in delivery vehicles.
- **Ideal** for deliveries where space is limited.
- **Built-in** handles.
- **Variety** of lengths and widths to choose from or ask about a custom size! From 6ft to 16ft. 26"-40"
- **Choose** between Twin tooth or Twin Tooth Punched for superior traction.
- **Choice** of Apron End or Flush Hook End. (Two 18" safety chains come standard with Apron End option)

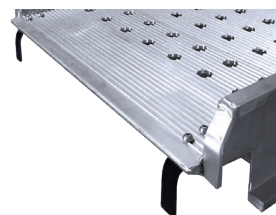
PRP  
Twin Tooth  
Punch Traction



PR  
Twin Tooth  
Traction



Type A - Apron End  
Level-off apron overlaps  
the truck bed



Type F - Flush Hook  
Steel hooks lock onto the truck bed  
provided flush-type direct entry

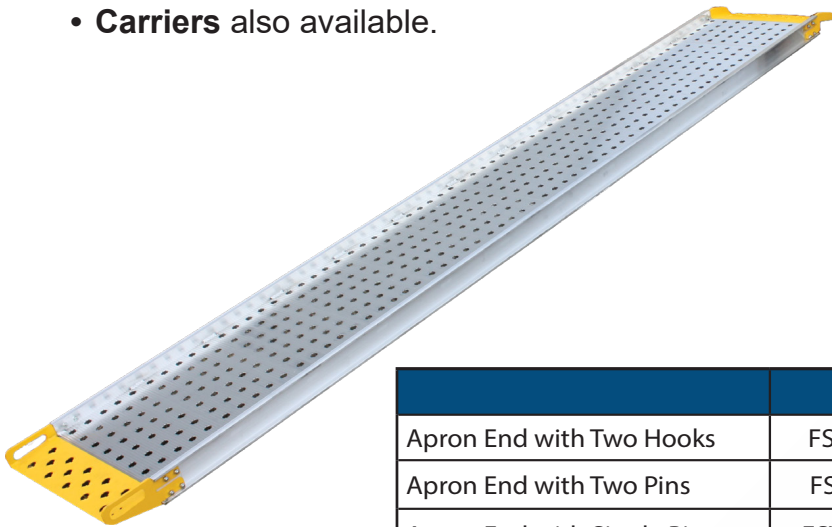
***All ramps include our industry leading 2 year warranty!***

***Extreme length shipping charge for certain sizes.***

# ***DEFENDER*** Walk Ramps

## Shared Features of Food Service Ramps

- **Machined** and grooved surface improves traction and will not collect mud, snow or debris.
- **Steel top** and bottom ends are replaceable and powder coated yellow to enhance visibility.
- **Fits in** most truck carriers.
- **Carriers** also available.



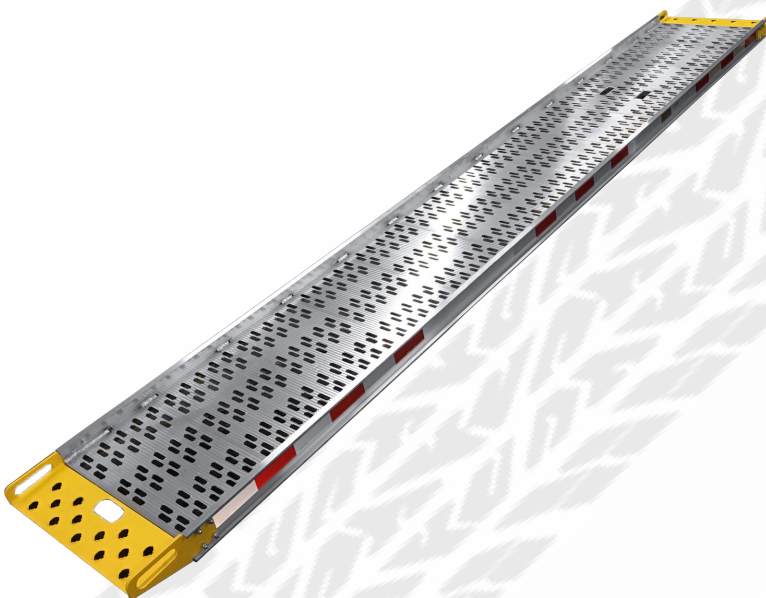
## Food Service Walk Ramp (FSW)

- **Traditional** round punch.
- **Three** different mounting options.

	12 ft	14 ft	16 ft
Apron End with Two Hooks	FSW-2612-AH	FSW-2614-AH	FSW-2616-AH
Apron End with Two Pins	FSW-2612-AP	FSW-2614-AP	FSW-2616-AP
Apron End with Single Pin	FSW-2612-ACP	FSW-2614-ACP	FSW-2616-ACP
Capacity	1,000 lb	1,000 lb	900 lb
Weight	103 lb	110 lb	117 lb

## Food Service Walk Ramp (FSW-GFS)

- **Strategically** placed oval punched holes provide optimum traction.
- **Hand slots** in the upper deck aids in deployment/storage, eliminating reaching across the ramp to lift.
- **Integrated** steel handles at each end.



	14 ft	16 ft
Capacity	1,300 lb	1,000 lb
Weight	104 lb	118 lb
Each are 26" wide with 24" usable width		

For further information please contact us at 800-334-7141 or [bpsales@bpmfg.com](mailto:bpsales@bpmfg.com)

[www.bpmfg.com](http://www.bpmfg.com)